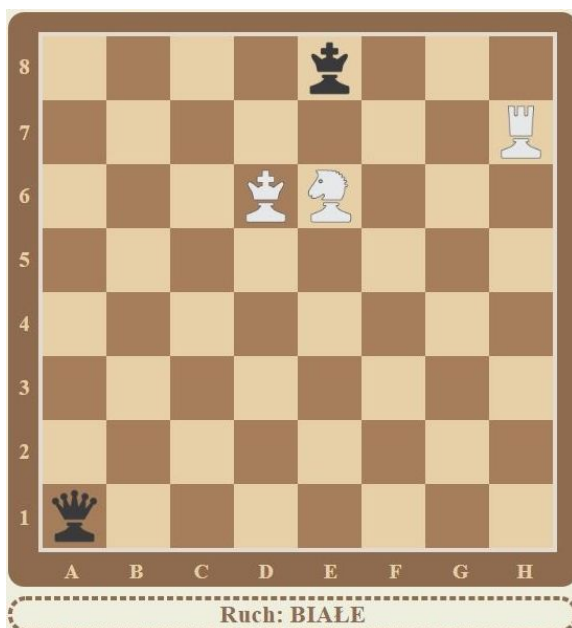


SzachMaks

Przykładowe zadania z II edycji konkursu przedmiotowego [SzachMaks](#).
Zadania dla kategorii SP6 (6. klasa szkoły podstawowej).

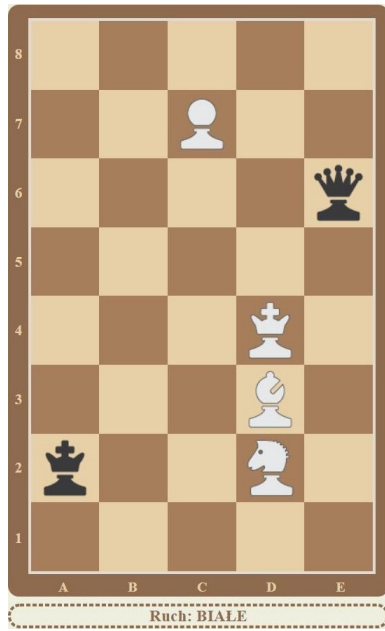
Zadanie 1.



Zadanie 2.



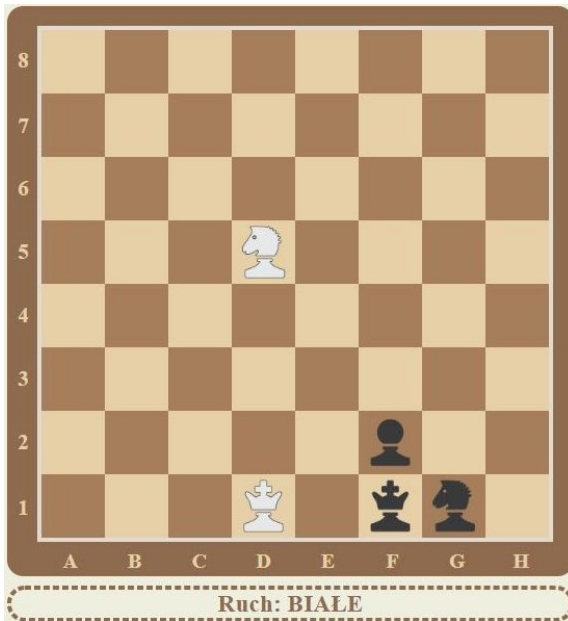
Zadanie 3.



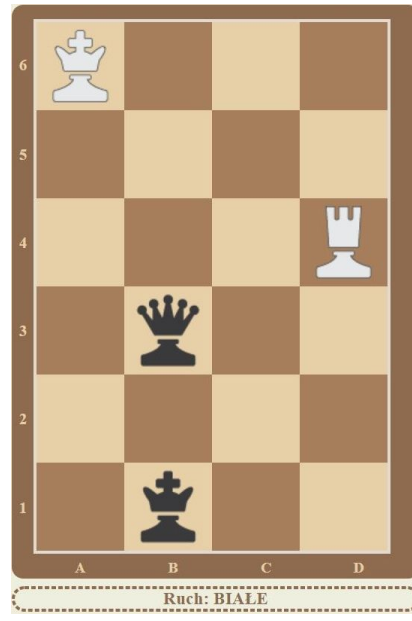
Zadanie 4.



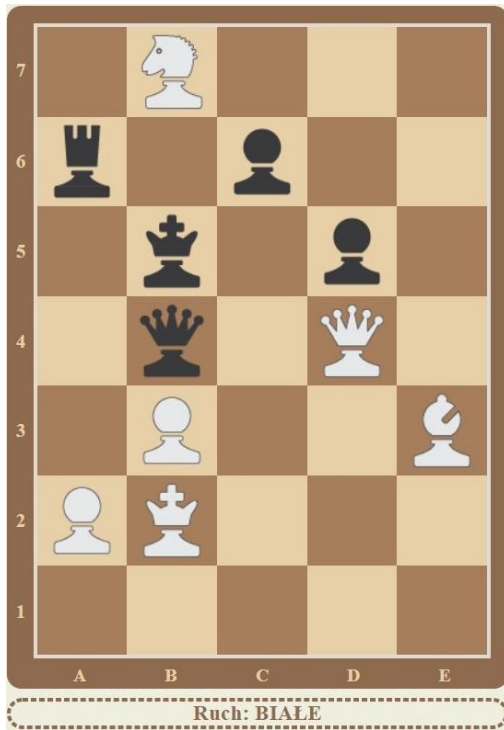
Zadanie 5.



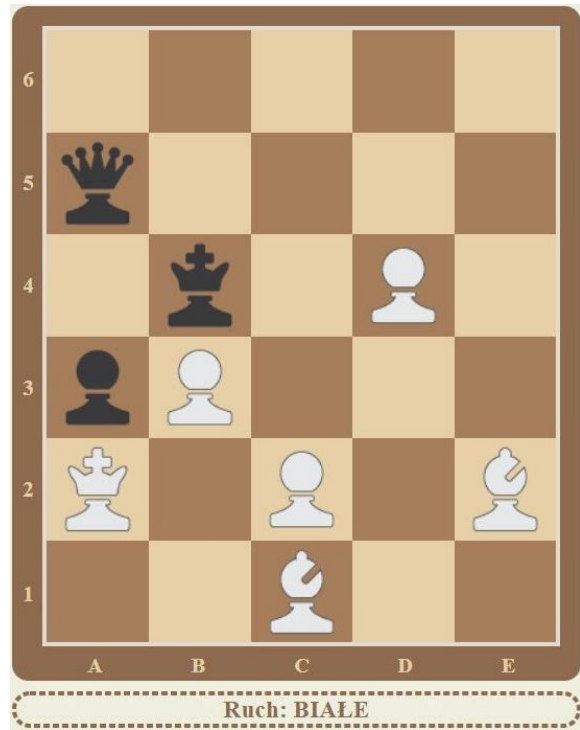
Zadanie 6.



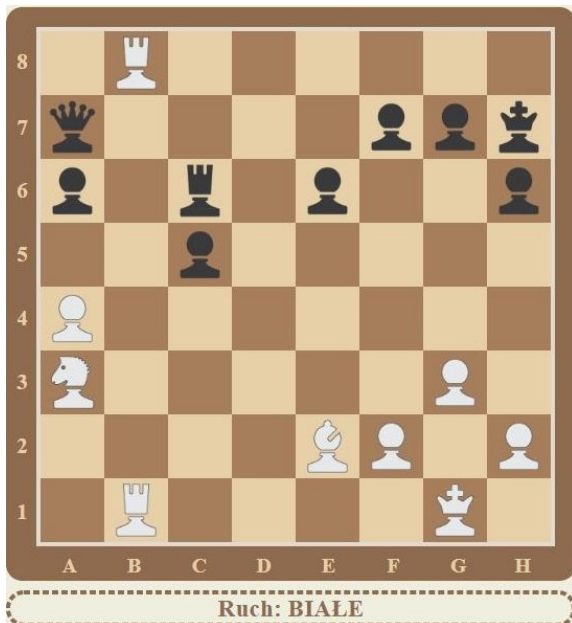
Zadanie 7.



Zadanie 8.



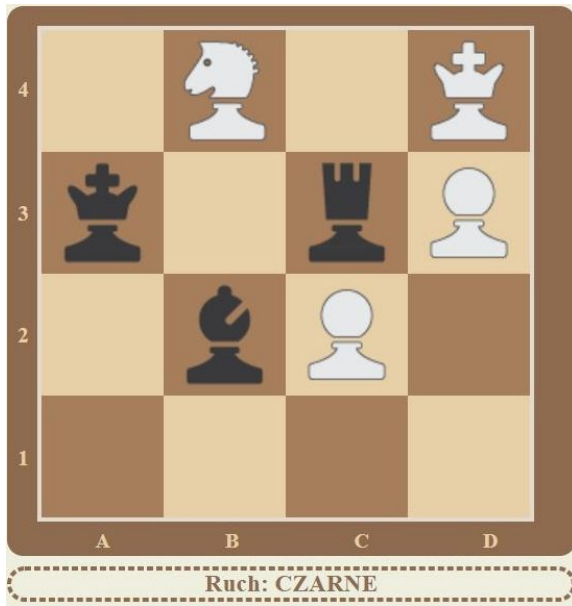
Zadanie 9.



Zadanie 10.



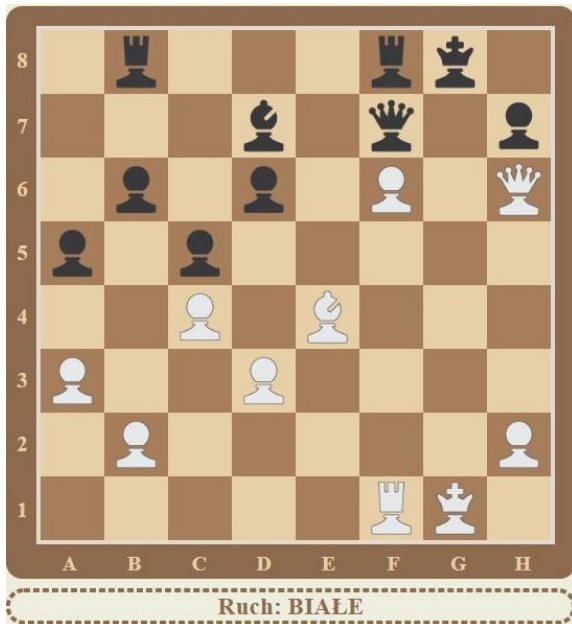
Zadanie 11.



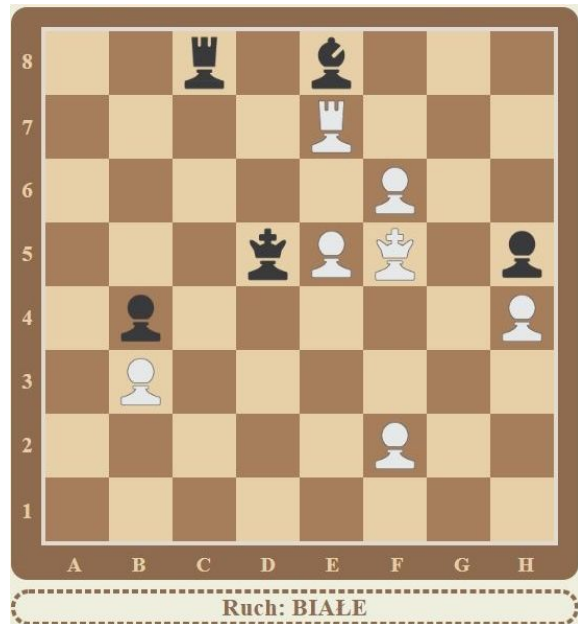
Zadanie 12.



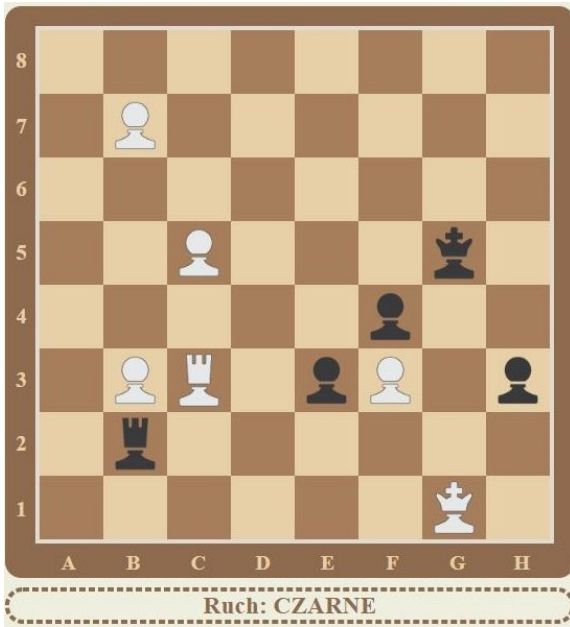
Zadanie 13.



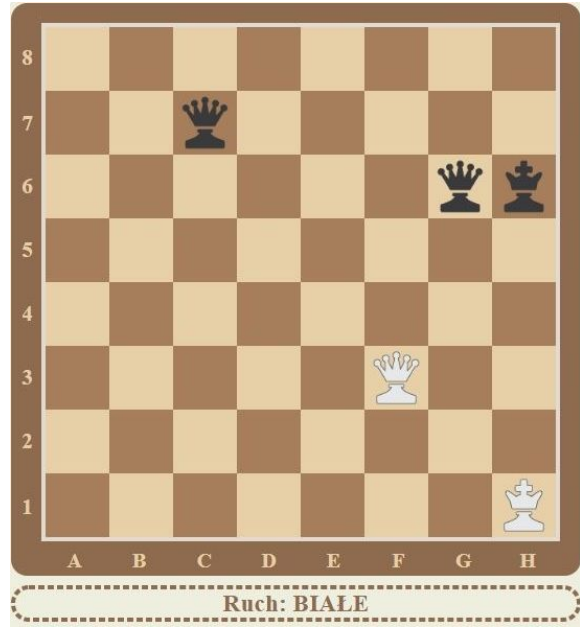
Zadanie 14.



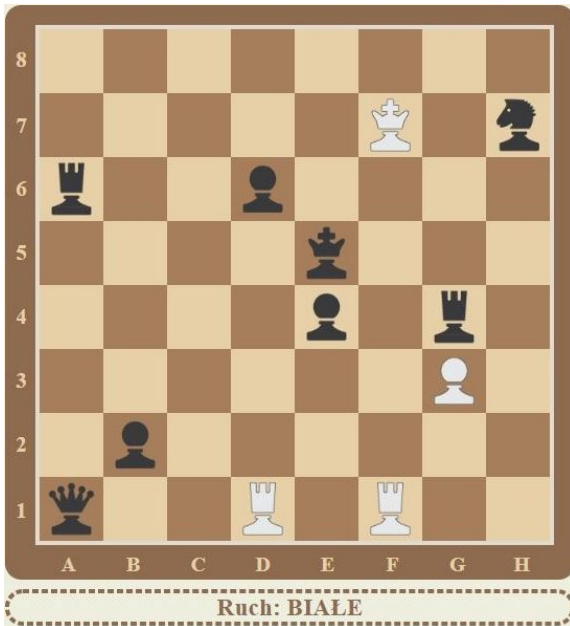
Zadanie 15.



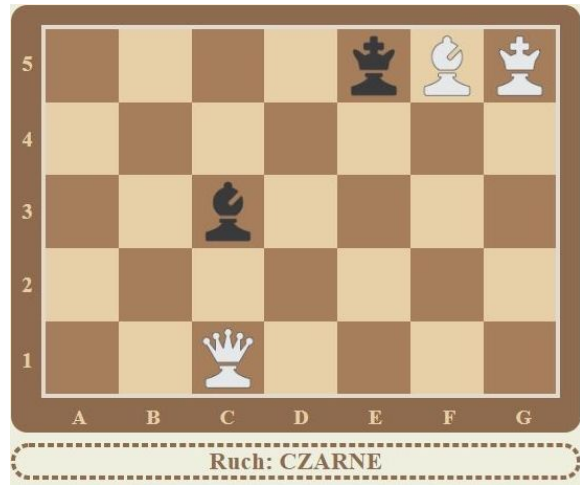
Zadanie 16.



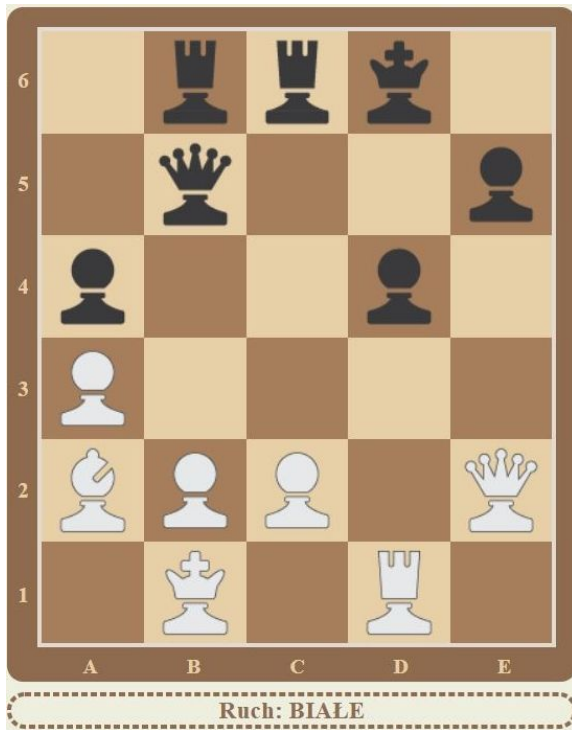
Zadanie 17.



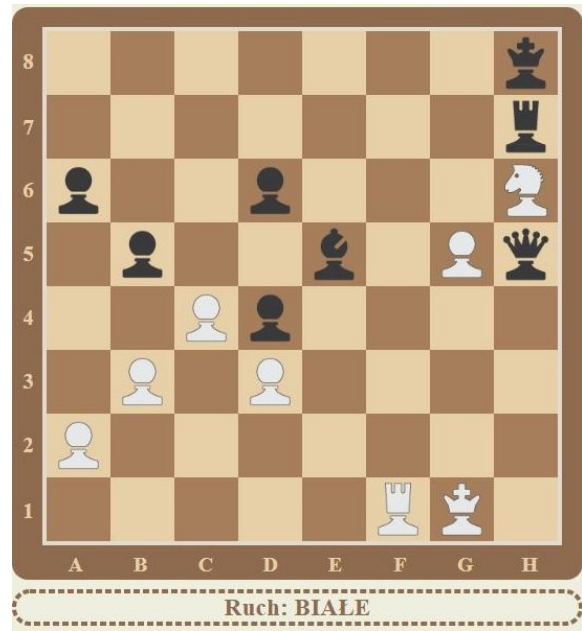
Zadanie 18.



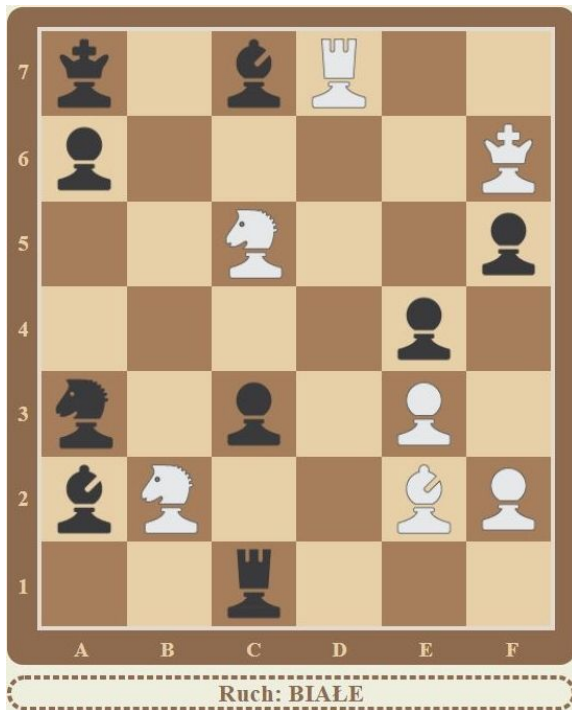
Zadanie 19.



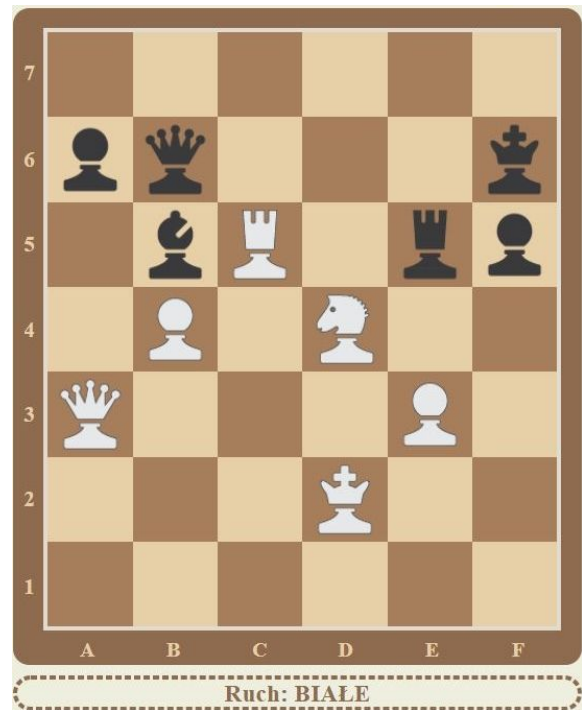
Zadanie 20.



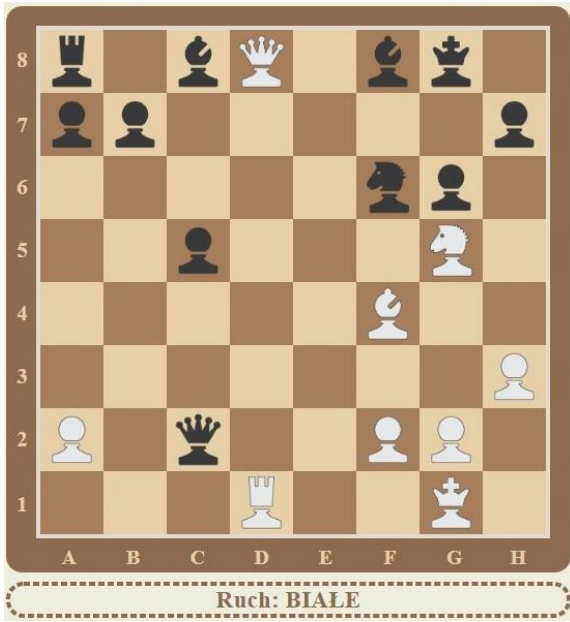
Zadanie 21.



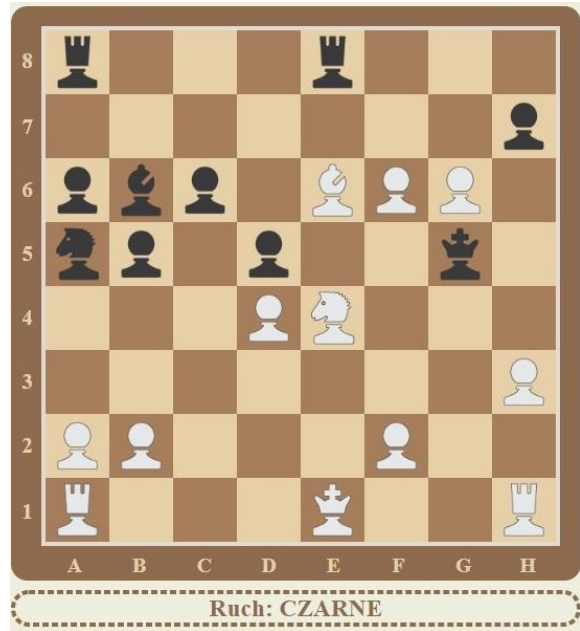
Zadanie 22.



Zadanie 23.



Zadanie 24.



Odpowiedzi

1	We7	3 pkt.
2	W:a4	3 pkt.
3	Gc4	3 pkt.
4	h3	3 pkt.
5	Se3	3 pkt.
6	Wb4	3 pkt.
7	a4	3 pkt.
8	Gd2	3 pkt.
9	W1b7	4 pkt.
10	c4	4 pkt.
11	Wxc2	4 pkt.
12	Gf1	4 pkt.
13	Gd5	4 pkt.
14	Wxe8	4 pkt.
15	Wb1	4 pkt.
16	Hf4	4 pkt.
17	Wf5	5 pkt.
18	Gd2	5 pkt.
19	Wxd4	5 pkt.
20	Wf8	5 pkt.
21	Sba4	5 pkt.
22	Hc3	5 pkt.
23	Ge5	5 pkt.
24	Kh6	5 pkt.